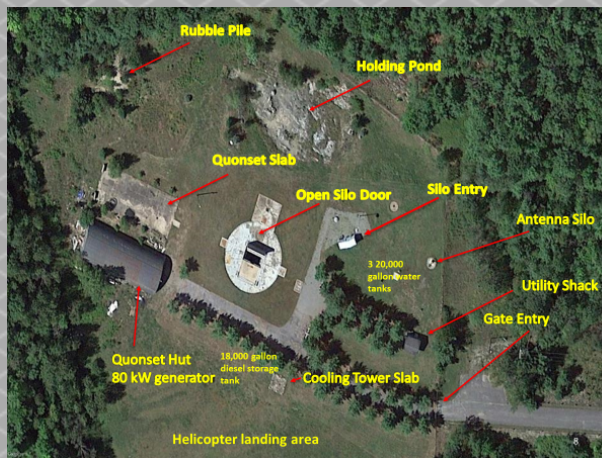
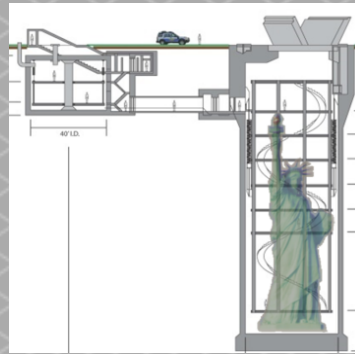


HARD AND DEEPLY BURIED TARGET TEST FACILITY

REPURPOSED ATLAS F THERMONUCLEAR
MISSILE LAUNCH FACILITY

PRIVATELY OWNED, LOCATED IN UPSTATE
NEW YORK



Silo Test Facility – Lewis

[HTTPS://YOUTU.BE/AGCLOGTOZGY](https://youtu.be/AGCLOGTOZGY)

TESTING LIMITED ONLY BY IMAGINATION

Key Attributes include

- Secure Grounds, 10 acre secure facility with 4,000 more acres available
- Wireless and Wired connectivity throughout facility (internal/external)
- Large open underground facility (60' x 190' cylinder)
- Quiet external RF environment
- Extreme 50+ dB isolation (potentially > 100 dB in specific locations)
- Operational silo doors and crane to enable easy access for equipment/test jigs
- Armored explosive test chamber, 8 ft X 30 ft (10 lbs. HE at atmospheric pressure)
- Fleet of 10 + heavy transport military vehicles (M985 HEMTT, M936, M816, MK48 LVS, M989A1 HEMAT and others)



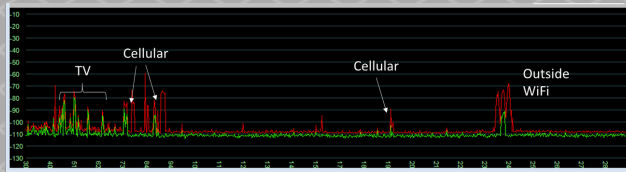
UNIQUE FEATURES

- 1 Megaton impact within ½ mile survivability
- Fully functional 110 Ton main access doors
- Test design/implementation possible within hours to days
- Designed with full CBRN resistance capability
- 500 PSI blast overpressure survival
- Three main multi-story hardened underground structures to over 20 stories deep
- Full seismic isolation on all structures
- Up to 100 dB signal attenuation
- FAA approved drone flight area
- Isolated in middle of 6 million acre Adirondack State Park



QUIET RF ENVIRONMENT

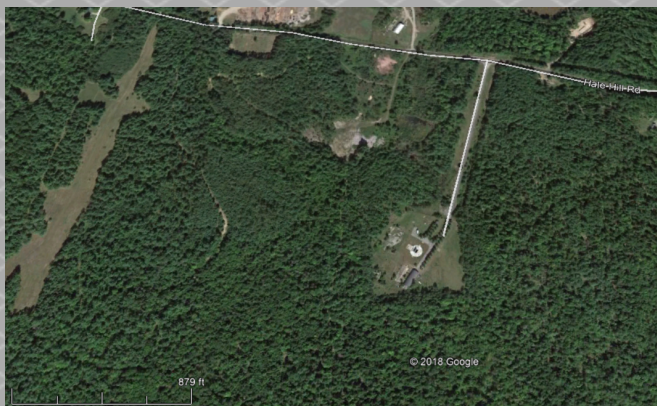
Lewis NY Area...



In the heart of the Adirondack State Park area. Very little ambient RF emissions, 10 miles from nearest airfield and greater than 20 miles from Plattsburgh International Airport.



Isolated facility within heavily foliated terrain.

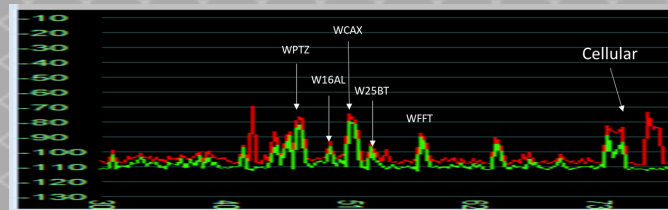


RF ENVIRONMENT

A great facility for applications that need low ambient signals (noise), few interference issues for getting emission authority, a great isolation facility for either high powered RF emission or interference sources.

No more than 8 possible TV transmitters

Callsign	Chan	Network	Dist (mi)	Path	NM (dB)	
WCAX-TV	20	CBS	41.0	LOS	53.3	506-512 MHz
WPTZ-DT	14 (5.1)	NBC	41.0	LOS	51.8	470-476 MHz
WETK-DT	32 (33.1)	PBS	41.0	LOS	45.4	578-584 MHz
WVNY-DT	13 (22.1)	ABC	41.0	LOS	44.5	174-180 MHz
WFFF-DT	43 (44.1)	Fox	41.0	LOS	41.6	602-608 MHz
W16AL	16 (16.1)		32.1	1Edge	14.4	482-488 MHz
W25BT-D	25		22.2	1Edge	3.1	536-542 MHz
WVER-DT	9 (28.1)	PBS	48.3	1Edge	-18.1	186-192 MHz



Rapid RF testing in a large enclosed facility ... without the need for lengthy approvals ...

INTERIOR – EXTERIOR ISOLATION

High isolation of main silo area from outside environment. Minimum of 40 dB attenuation and greater than 80 dB attenuation. Tested for 300 - 3000 MHz.



Exterior reception with test signal sweep with doors open (top) and with silo doors closed. No RF reduction enhancements employed. 40 dB at frequencies below 600 MHz.

Documented isolation between section of test area within silo.

